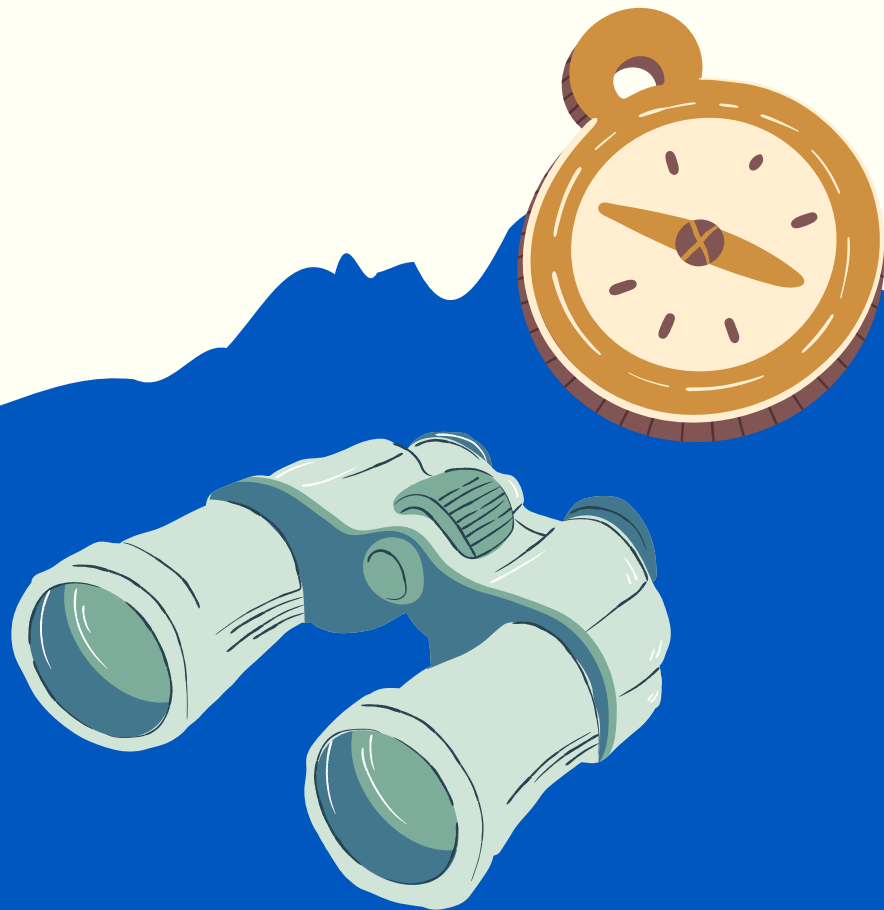


Quiz

All About Antarctica





How to Play:



01

Read the
questions
carefully.

02

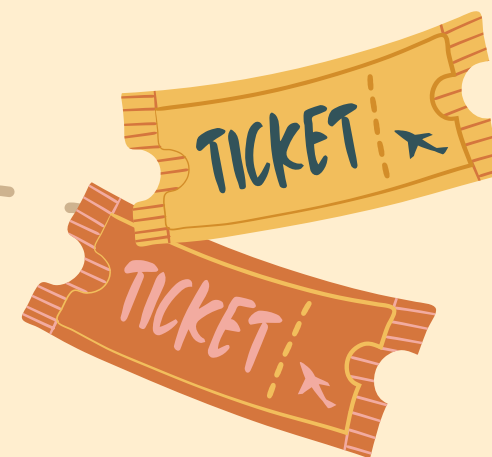
Choose the
correct
answer.

03

A point will be
given for each
correct
answer.



**Are you ready
to play?**



Where is Antarctica located?

A

South Pole

B

In the middle of the
Atlantic Ocean

C

North Pole

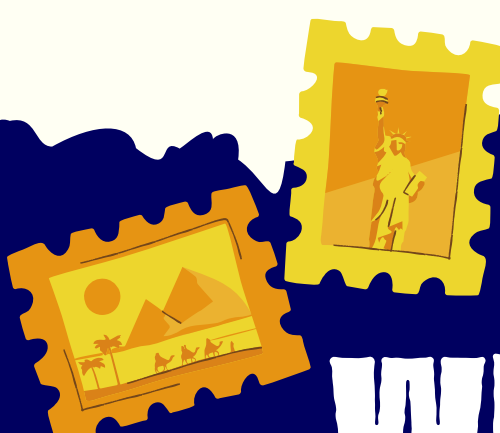




South Pole!

Antarctica is at the very bottom of the Earth, surrounding the South Pole. Unlike other continents, it doesn't have countries or cities and is mostly covered by ice. Its location makes it the coldest place on the planet.





What percentage of the world's fresh water is frozen in Antarctica?

A

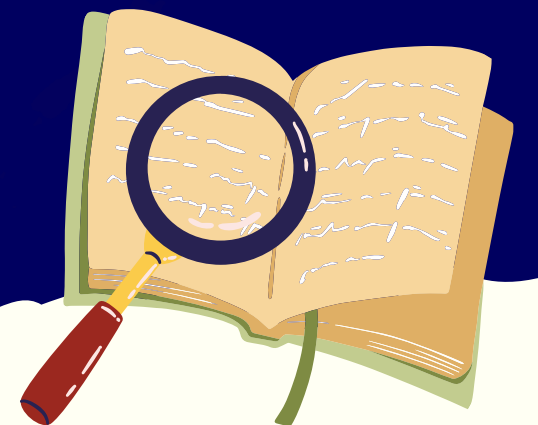
50%

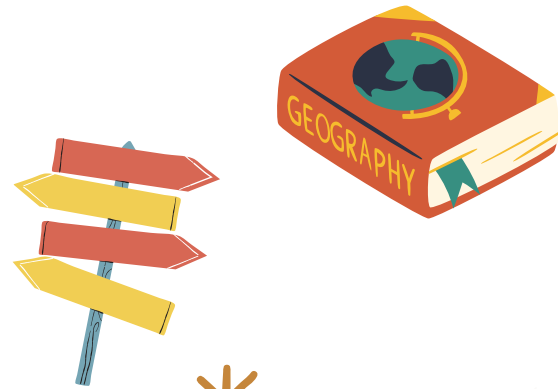
B

60%

C

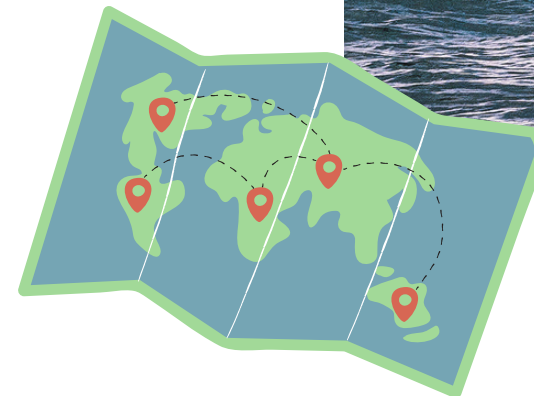
70%

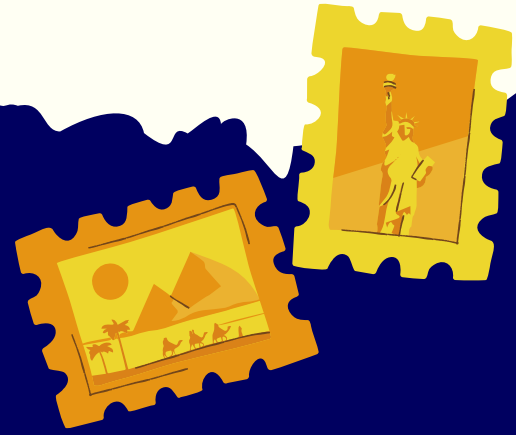




60%!

About 60% of all the fresh water on Earth is frozen in Antarctica's ice sheet. This enormous amount of ice affects global sea levels and stores more fresh water than all the rivers and lakes combined.





03
1

Which of the following animals live in Antarctica? (Select all that apply)

A

Penguins

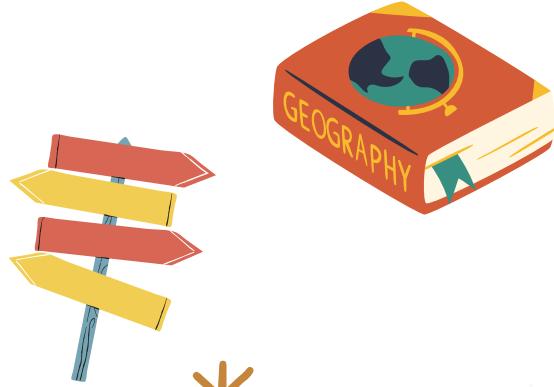
B

walruses

C

Orcas





*Penguins and orcas

Penguins and orcas are well adapted to the icy conditions of Antarctica and the surrounding ocean. Walruses, however, live in the Arctic, not the Antarctic, so they are not part of Antarctica's wildlife.



What happens to sunlight in Antarctica during summer and winter?

A

Summer is dark,
winter has 24-hour
daylight

B

Summer has 24-hour
daylight, winter is
dark

C

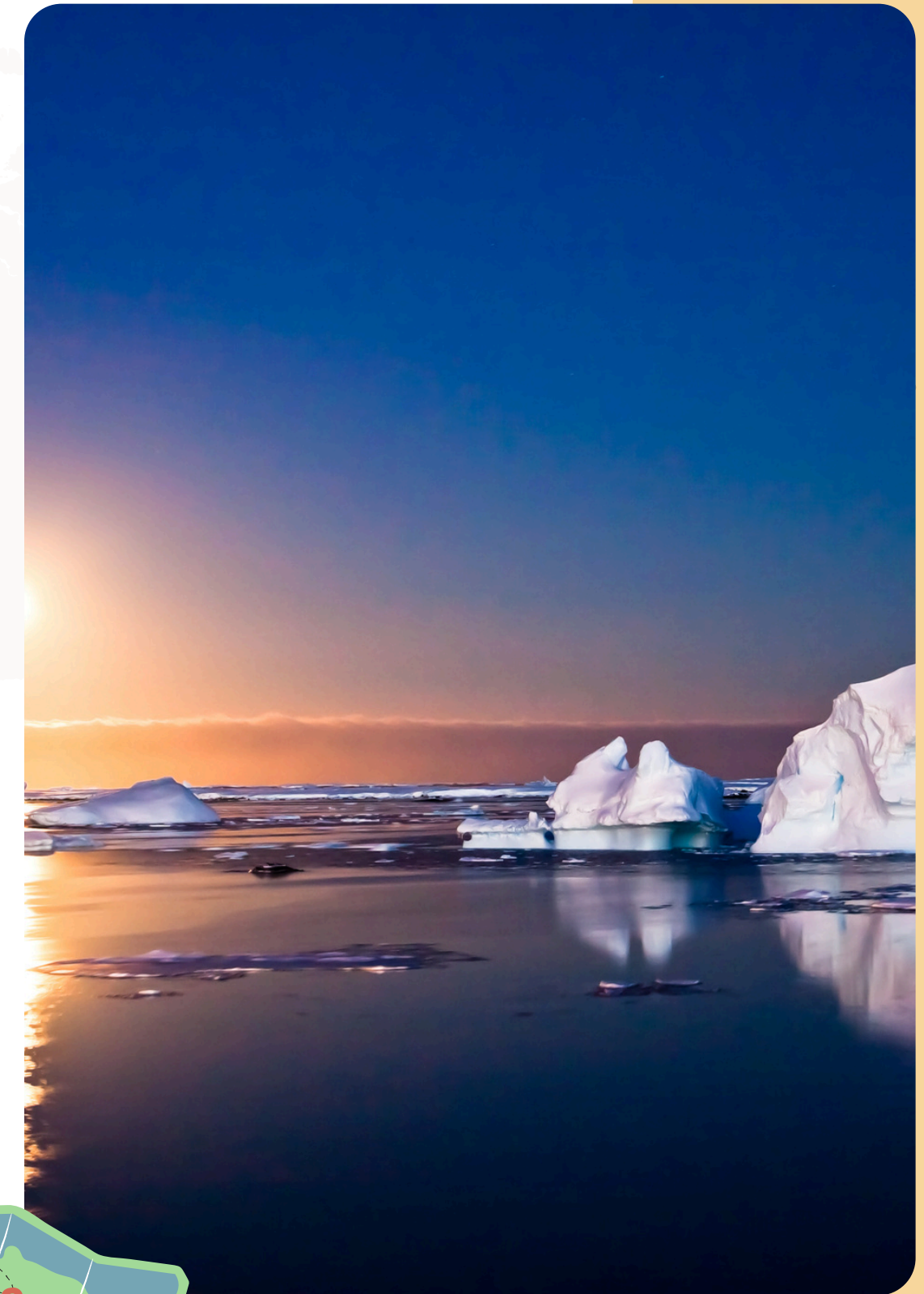
Both summer and
winter have 12-hour
days





Summer has 24-hour daylight, winter is dark

In summer, the sun never sets, so Antarctica experiences continuous daylight. In winter, the opposite happens. The sun doesn't rise for months, leaving the continent in darkness. This extreme change is due to its location at the South Pole.





What is Blood Falls, and why does it appear red?

A

A volcanic eruption

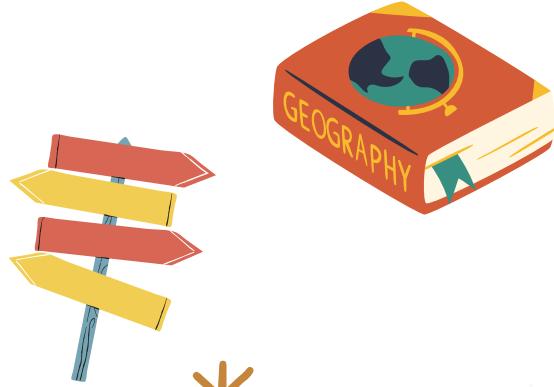
B

Red algae growing on the ice

C

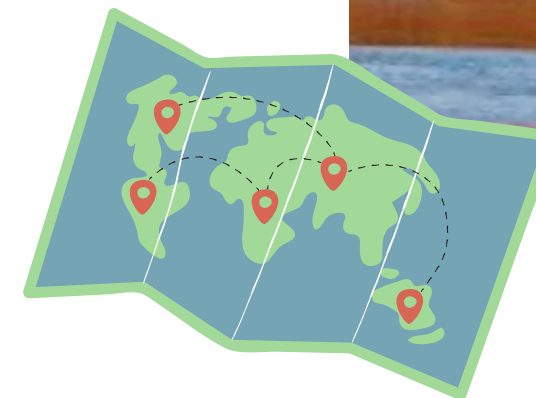
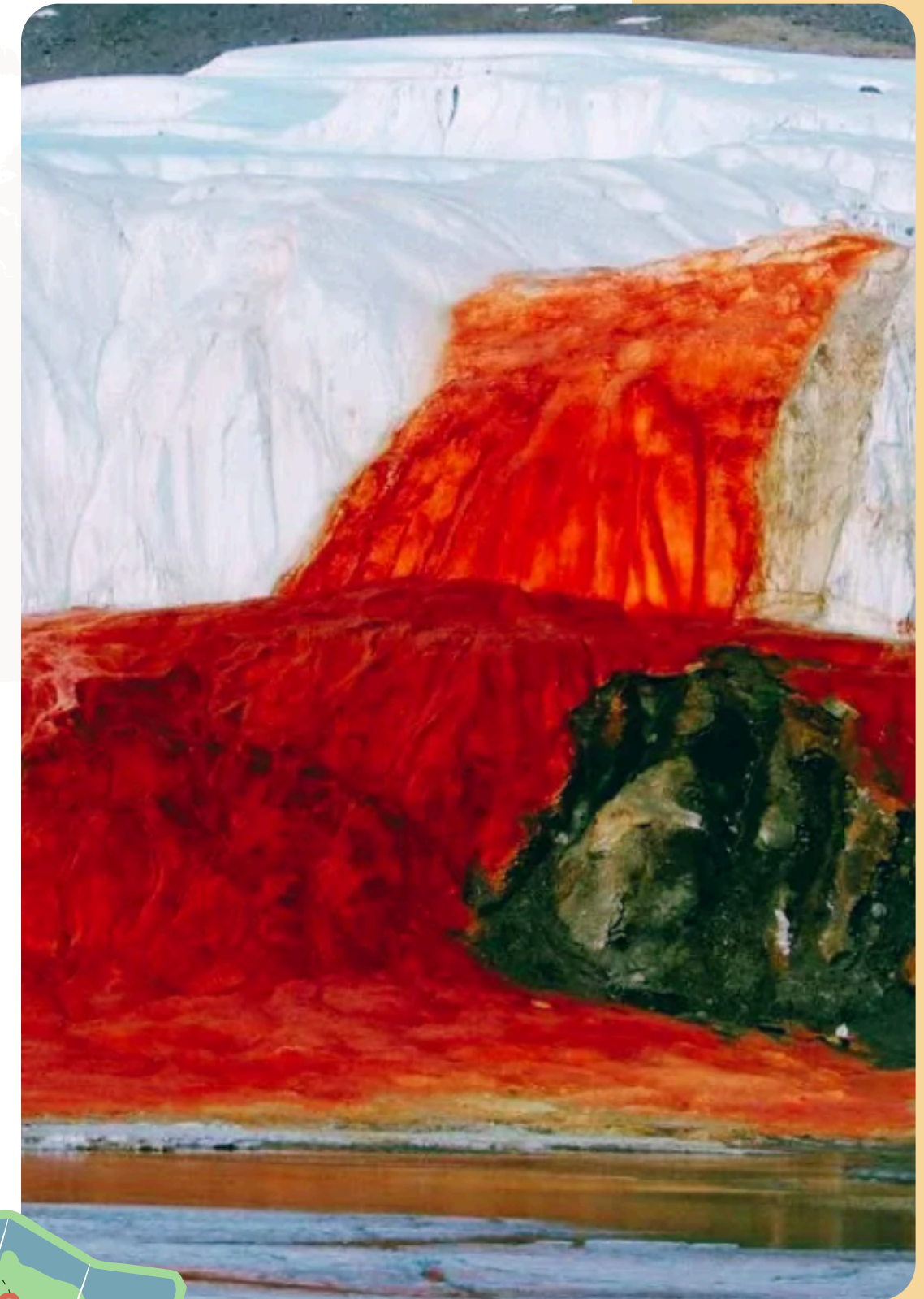
Red-colored water from iron in salty water under a glacier





*Red-colored water from iron in salty water under a glacier

Blood Falls looks like a glacier bleeding because red, rusty-colored water flows from under the ice. The color comes from iron-rich salty water that has been trapped beneath the glacier for millions of years, reacting with oxygen when it reaches the surface.



**Antarctica has permanent native people
living on the continent.**

A

True

B

False





False!

Antarctica has no native human population. People who live there are scientists who stay temporarily in research stations to study the land, wildlife, and climate. The continent is governed by the Antarctic Treaty to keep it peaceful and focused on scientific research.





Which of the following statements about krill is true?

A

Krill are dangerous predators that hunt penguins

B

Krill are tiny shrimp-like creatures that many Antarctic animals rely on for food

C

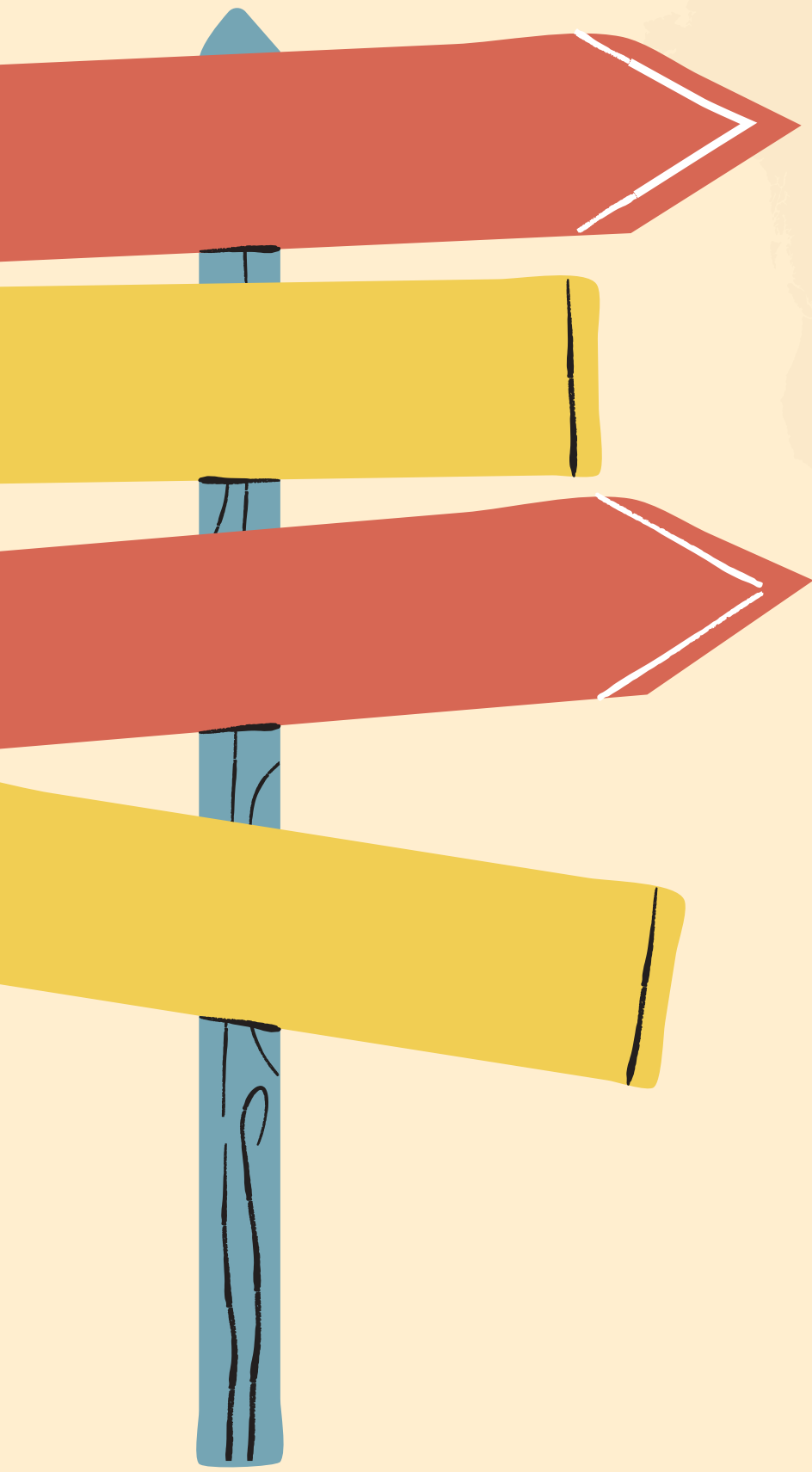
Krill live only on land in Antarctica





Krill are tiny shrimp-like animals that live in the waters around Antarctica. They are a crucial part of the food chain, feeding penguins, seals, whales, and seabirds, so without them, much of Antarctic wildlife would struggle to survive.





**How many points did
you get?**



Check your rank level!

5-7

Adventurer

3-4

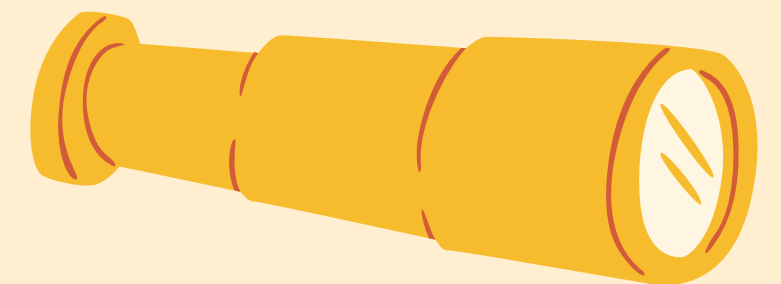
Traveler

2

Tourist

1-0

Amateur Tourist



Certificate of Achievement



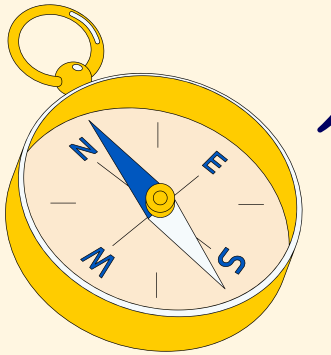
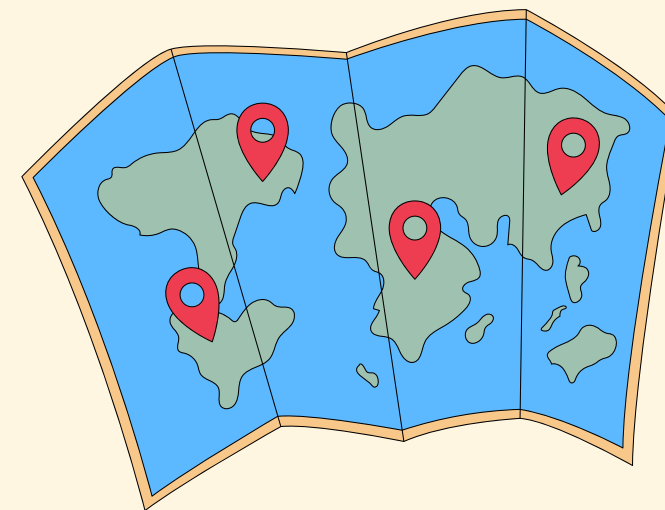
Awarded to: _____

For completing the "Discover New Zealand" Quiz with curiosity and courage!

You explored the country's amazing landscape and wildlife and showed what a brilliant Little Explorer you are.

Keep exploring, learning, and dreaming big.

The Little Explorers' Journal



WANT TO TRAVEL THE WORLD THROUGH ADVENTURE STORIES?

Join our newsletter on www.thelittleexplorersjournal.com



Want to join the Intrepid Explorers on their most mysterious mission yet?

Solve the riddles. Find the stolen artefact. Survive the mission.

When thirteen-year-old Archie signs up for a high-stakes virtual reality game, he has no idea he's about to embark on the adventure of a lifetime. Thrown together with four unlikely teammates, Archie must decode historical puzzles, defeat dangerous pirates, and survive a cassowary attack...all to recover a priceless painting before it's lost forever.

But just when the team thinks the game is over, a mysterious email changes everything: an ancient and sacred artefact, the royal flute of Makassar, has been stolen. It's time for the Intrepid Explorers to take on a real-world mystery.

From crocodile-infested swamps and an abandoned mine in the Australian desert to a bobby-trapped room in a famous art gallery, the five children will face life-threatening challenges. They'll have to rely on their courage, survival instincts and ability to solve cryptic puzzles to complete their mission before time runs out.

Will they be able to recover the sacred object before it vanishes forever?

This book is the debut instalment in a new mystery-adventure series that takes middle-grade readers on epic quests around the world, exploring cultures, wildlife, and landmarks along the way.

Adventure awaits, so grab your copy here



Perfect for **ages 9+**, this book is packed with:

- ✓ Action & mystery
- ✓ Riddles
- ✓ Beautiful landscapes
- ✓ Facts about Australia's culture and history
- ✓ Courage
- ✓ Friendship
- ✓ Teamwork

