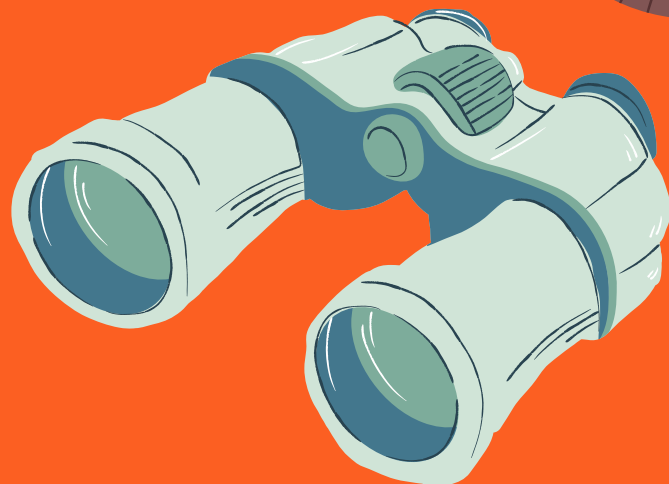
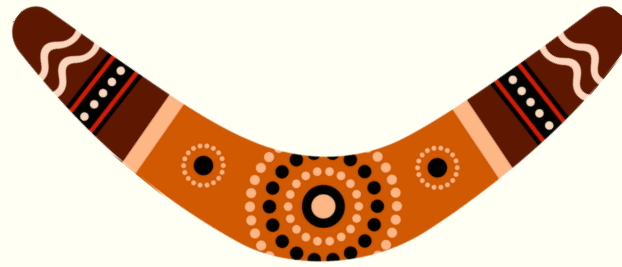




Quiz



ALL About Australia





How to Play:



01

Read the
questions
carefully.

02

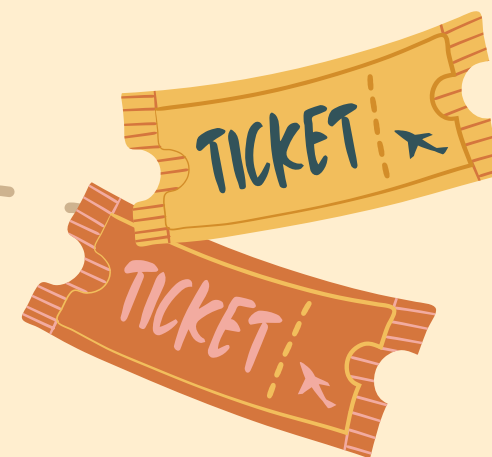
Choose the
correct
answer.

03

A point will be
given for each
correct
answer.



**Are you ready
to play?**



What is the capital city of Australia?

A

Sydney

B

Melbourne

C

Canberra





Canberra

Even though Sydney and Melbourne are bigger, more famous, and often visited by tourists, Canberra was specifically chosen as a compromise location between the two cities.



Who are the First Australians?

A

The British

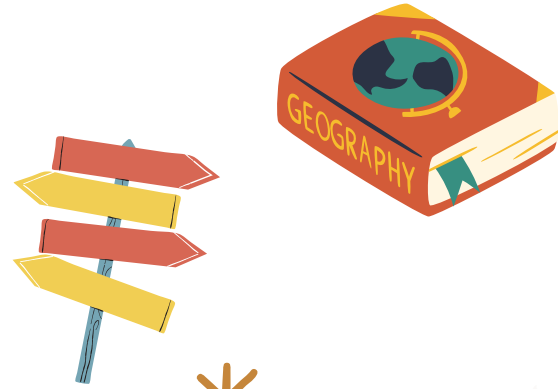
B

The French

C

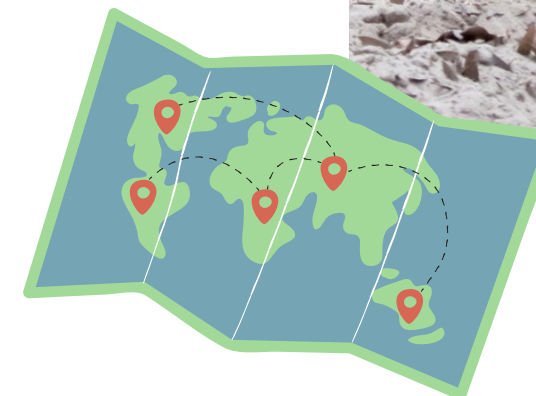
Aboriginal and
Torres Strait
Islander peoples





Aboriginal and Torres Strait Islander peoples

They have lived in Australia for over 60,000 years, making them the world's oldest continuous cultures. Their traditions, languages, and knowledge of the land are a vital part of Australia's identity.



Which one of these is an Australian desert?

A

Simpson Desert

B

Great Victoria
Desert

C

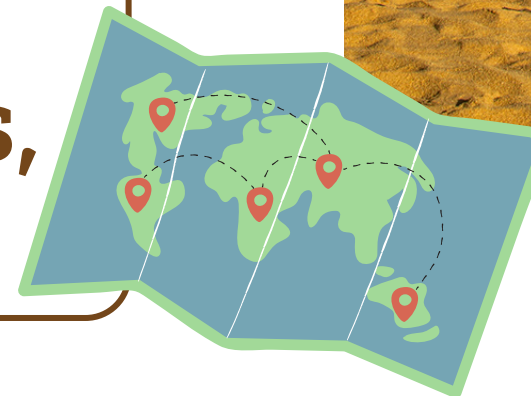
Tanami Desert





All of them!

Australia has 10 major deserts, which cover about 18% of the continent's land area. These deserts, including the Simpson, Great Victoria, Great Sandy, Gibson, Tanami, and others, are home to unique ecosystems, plants, animals.



How many states make up Australia?

A

4

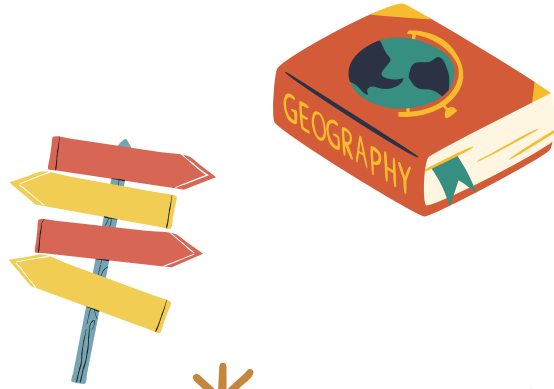
B

6

C

8





6!

Australia has 6 states (New South Wales, Queensland, South Australia, Tasmania, Victoria, and Western Australia) and 2 territories.





Which Aboriginal stories explain how the world and its people were created?

A

The Great
Barrier Story

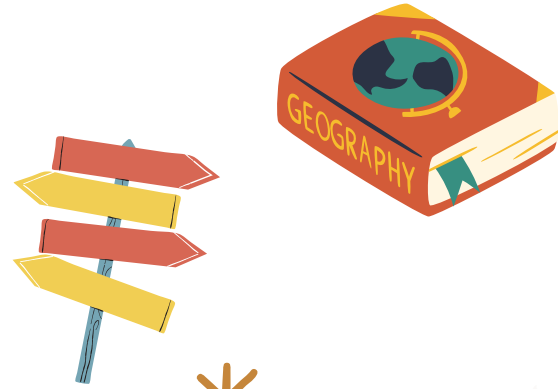
B

The Island Myths

C

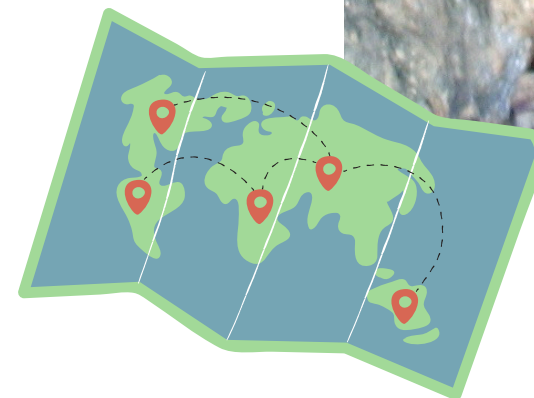
The Dreaming
(Dreamtime)





The Dreaming (Dreamtime)

These stories, known as The Dreaming or Dreamtime, are central to Aboriginal culture because they explain how the land, animals, people, and laws came to be. They carry important lessons about respect for nature, community responsibilities, and the balance between people and the environment. Each story is tied to specific places, plants, and animals, teaching generations how to hunt sustainably, protect sacred sites, and live in harmony with the land.



The Great Barrier Reef is so big it can be seen from space.

A

True

B

False





True!

Stretching over 2,300 km along the Queensland coast, the Great Barrier Reef is the largest coral reef system in the world, made up of over 2,900 individual reefs, 900 islands, and 600 types of hard and soft coral. It is home to thousands of species, including 1,500 species of fish, 400 kinds of coral, 6 species of sea turtles, and dugongs (sea cows).





Which special day celebrates Aboriginal and Torres Strait Islander cultures?

A

Melbourne Cup

B

Australia Day

C

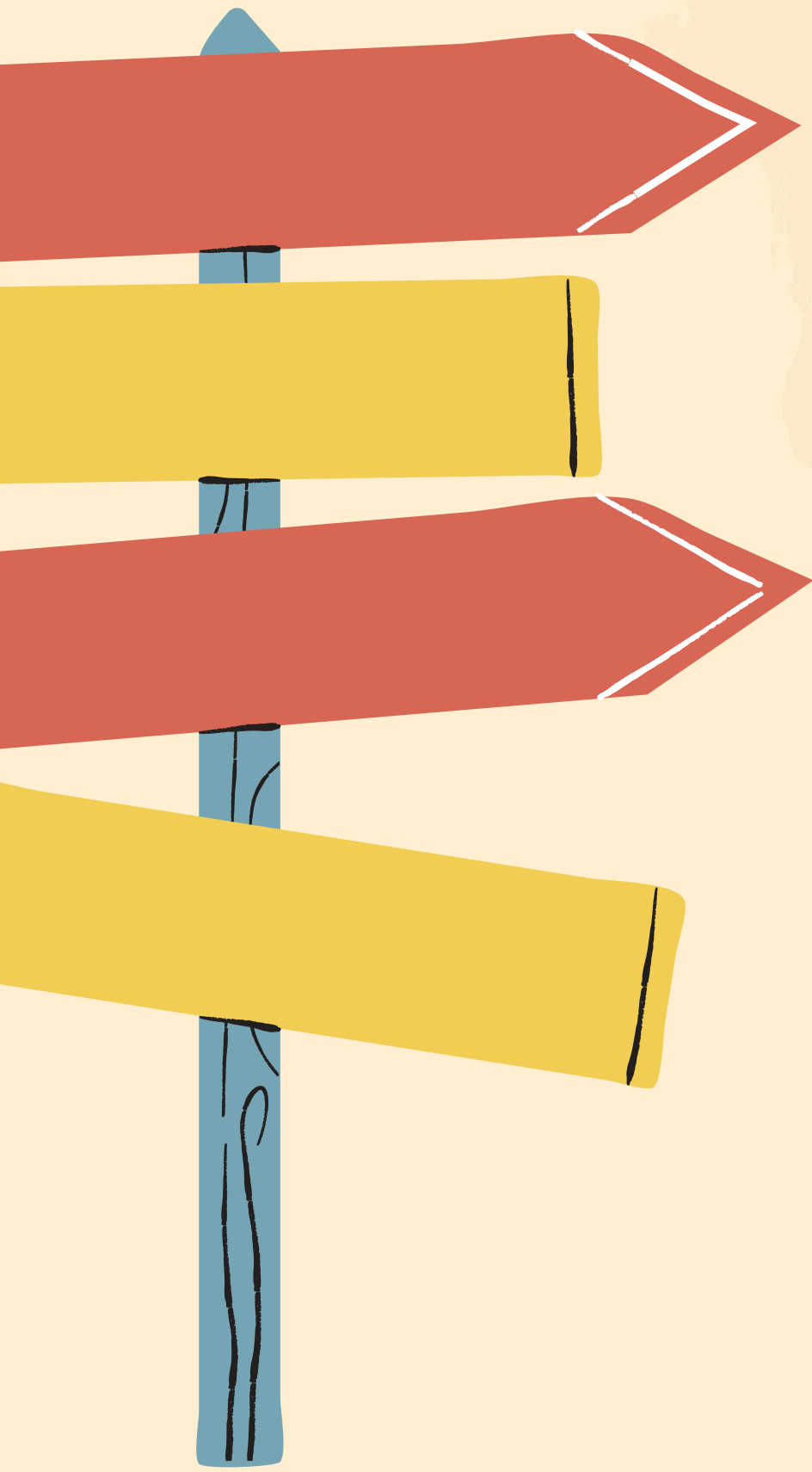
NAIDOC Week





NAIDOC Week (in July every year) is celebrated with festivals, art, and performances to honour Indigenous history and culture.





**How many points did
you get?**



Check your rank level!

4-5

Adventurer

3

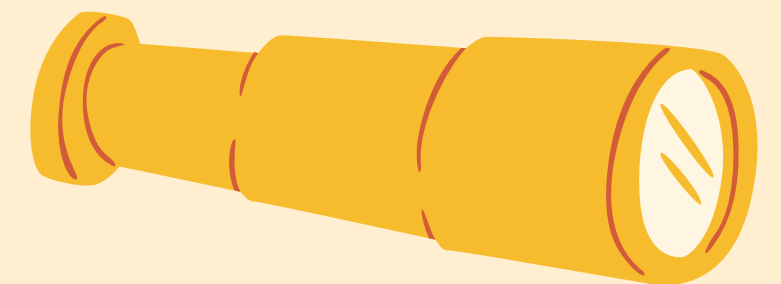
Traveler

2

Tourist

1-0

Amateur Tourist



Certificate of Achievement

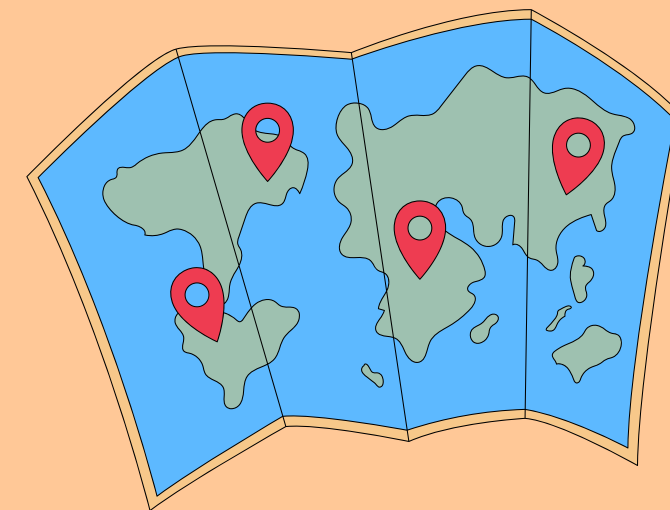


Awarded to: _____

For completing the "Discover Australia" Quiz with curiosity and courage!
You explored Australia's traditions, nature, and amazing landscapes and
showed what a brilliant Little Explorer you are.

Keep exploring, learning, and dreaming big.

The Little Explorers' Journal



WANT TO TRAVEL THE WORLD THROUGH ADVENTURE STORIES?

Join our newsletter on www.thelittleexplorersjournal.com

