

# New Zealand Quiz



# How to Play:



**01**

Read the  
questions  
carefully.

**02**

Choose the  
correct  
answer.

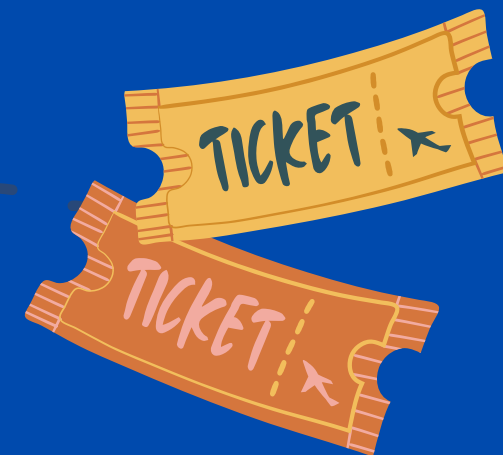
**03**

A point will be  
given for each  
correct  
answer.





**Are you ready  
to play?**



# What are the two main islands of New Zealand?

**A**

East Island and  
West Island

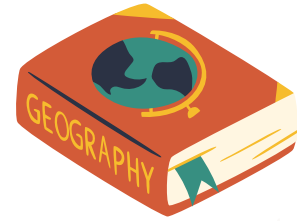
**B**

North Island and  
South Island

**C**

South Island and  
West Island





# North Island and South Island

New Zealand is made up of these two main islands plus over 700 smaller islands. The North Island is known for geothermal activity and rolling farmland, while the South Island is famous for the Southern Alps and glaciers.





# Who were the first people to settle in New Zealand?

**A**

British settlers

**B**

Dutch explorers

**C**

Māori people





# Māori people

The Māori people arrived from Polynesia around the 13th century. Māori culture heavily influences New Zealand today through traditions, language, and festivals.





# What is the highest peak in New Zealand?

**A**

Aoraki/Mount  
Cook

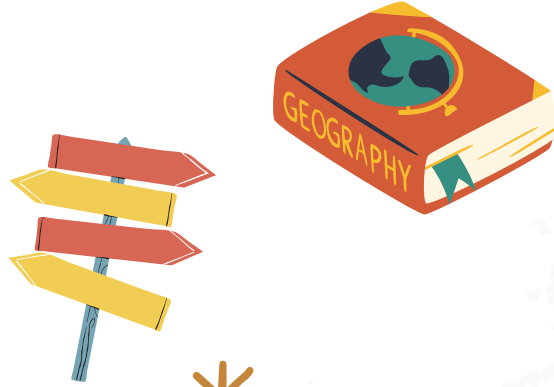
**B**

Mount Ruapehu

**C**

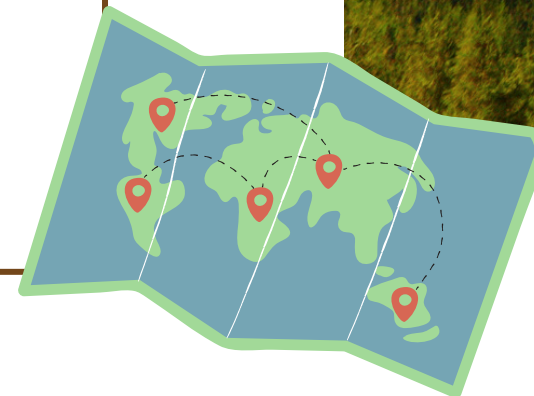
Mount Egmont





# \* Aoraki/Mount Cook

Aoraki, also known as Mount Cook, is New Zealand's highest peak, standing at 3,724 meters (12,218 feet). It is located in the Southern Alps on the South Island, a spectacular mountain range that stretches along much of the island's spine.



**Which city is New Zealand's main financial centre?**

**A**

Christchurch

**B**

Wellington

**C**

Auckland







# Auckland

Auckland is New Zealand's biggest city and main financial hub. It's a multicultural place with Māori, European, and Pacific Island influences. Auckland is also a centre for industries like tourism, film, and technology.



## Rotorua is famous for:

**A**

Golden beaches  
and forests

**B**

Bubbling geothermal  
pools and Māori  
culture

**C**

Glowing worms  
underground







# Bubbling geothermal pools and Māori culture!

Rotorua sits on a geothermal hotspot with geysers, mud pools, and hot springs. It's also a cultural hub where visitors can learn about Māori traditions.



**Which of the following is NOT found in New Zealand?**

**A**

Tuatara

**B**

Koala

**C**

Kiwi

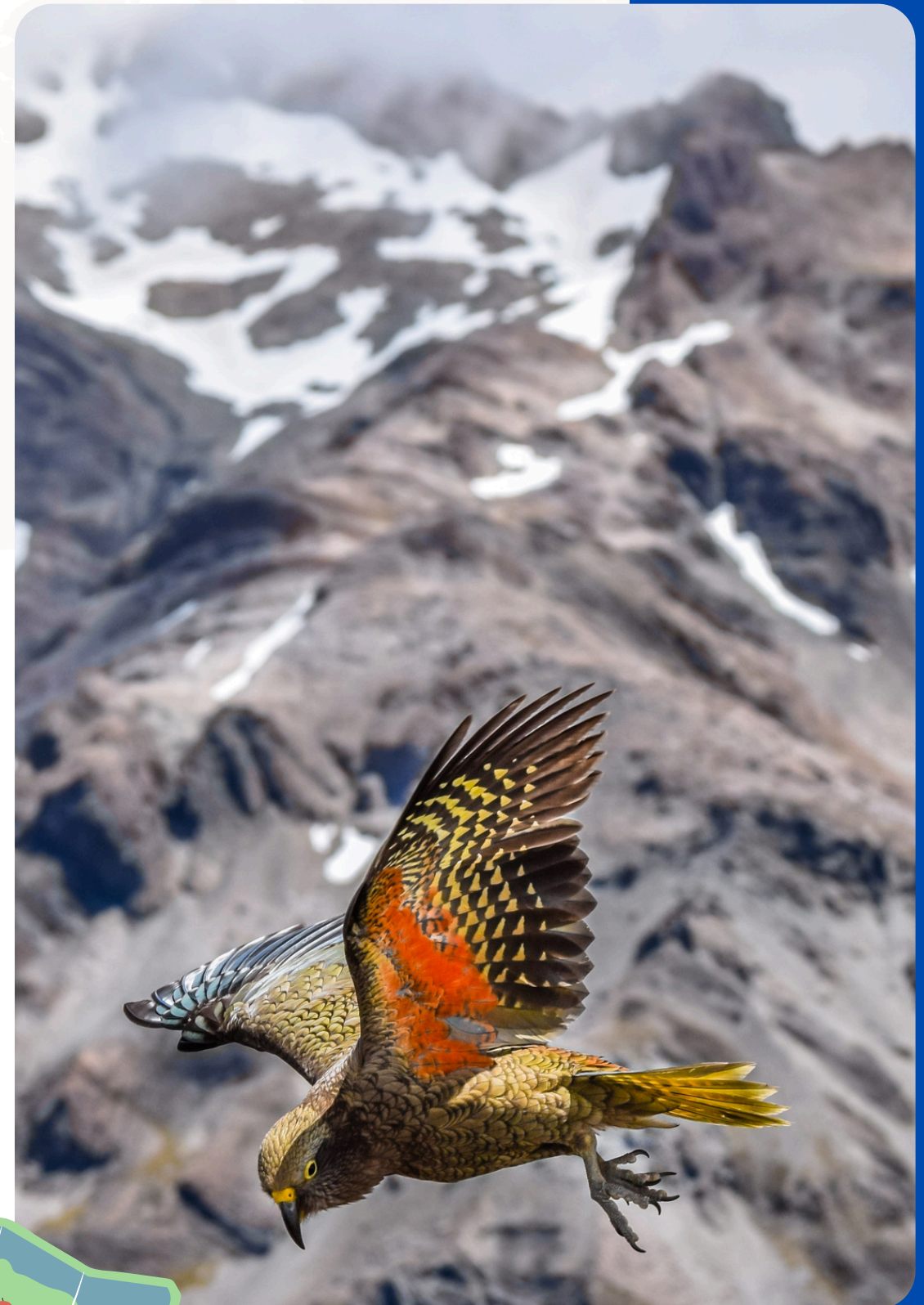






# Koalas!

Koalas are native to Australia, so you won't find them in New Zealand. Instead, New Zealand is home to some really unique animals you won't see anywhere else in the world, like the flightless kiwi, the ancient reptile tuatara, and the playful alpine parrot called the kea.



# When was the Treaty of Waitangi signed?

**A**

1642

**B**

1769

**C**

1840

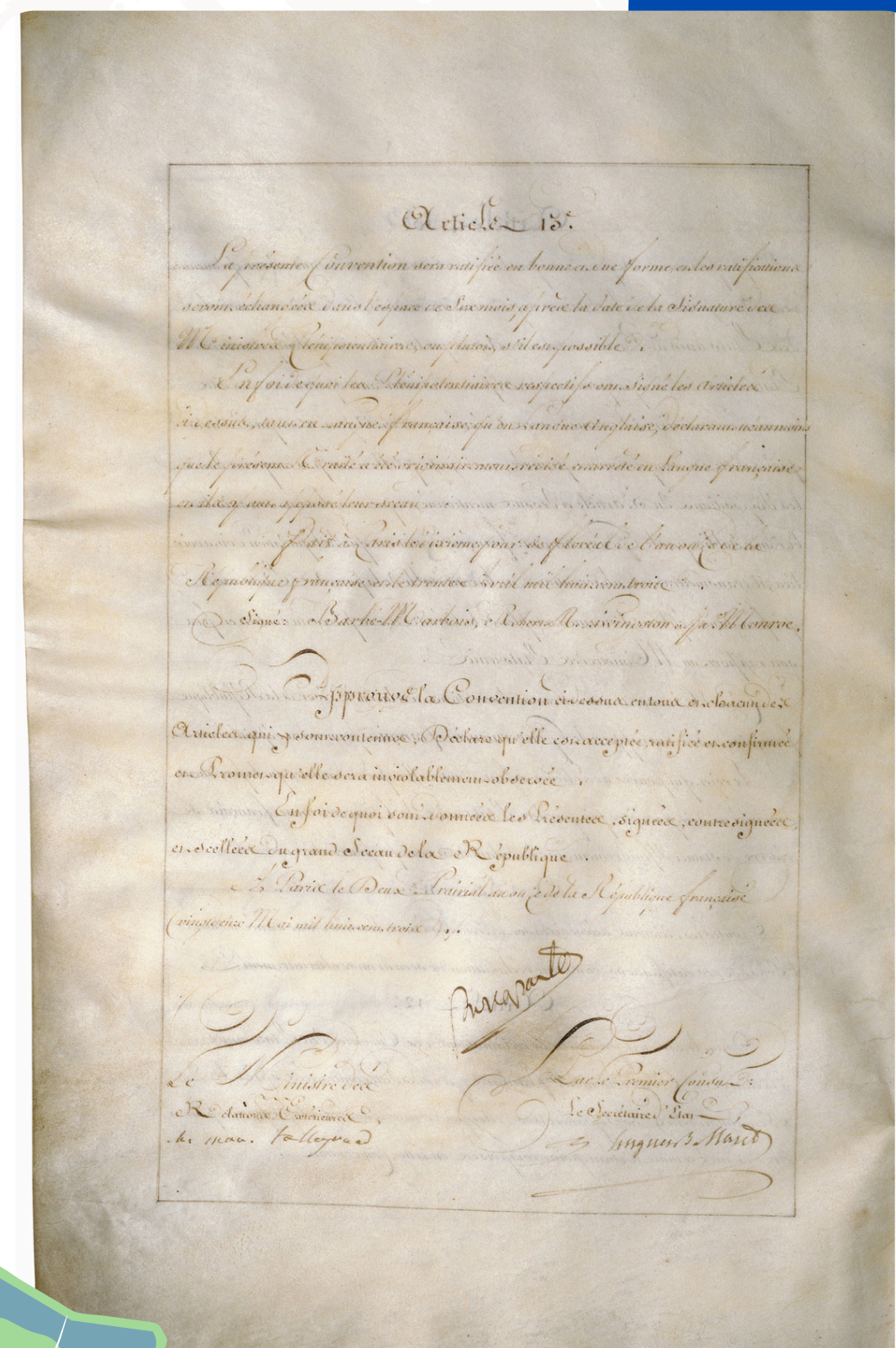
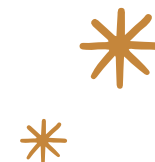






**1840!**

In 1840, the Treaty of Waitangi was signed between Māori chiefs and representatives of the British Crown. This important agreement marked the beginning of New Zealand as a British colony and established guidelines for how the British and Māori would live and work together.





**Which unique New Zealand bird cannot fly?**

**A**

The Kea

**B**

The Kiwi

**C**

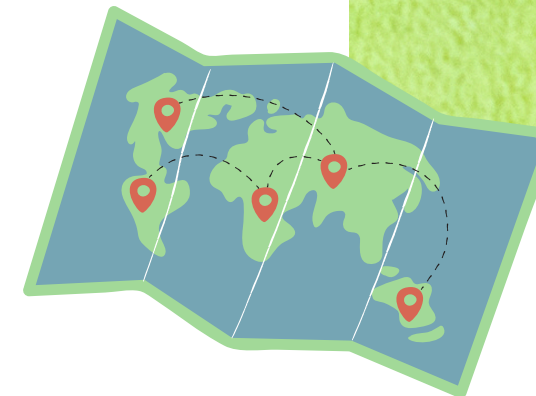
The Kererū





# Kiwis!

Kiwis are flightless birds native to New Zealand and are considered a national symbol. Unlike other birds, they have tiny wings and rely on their strong legs for running and digging for food.





# What is Tāne Mahuta known as?

**A**

The world's  
tallest mountain

**B**

The Lord of the  
Forest

**C**

The first Māori  
explorer

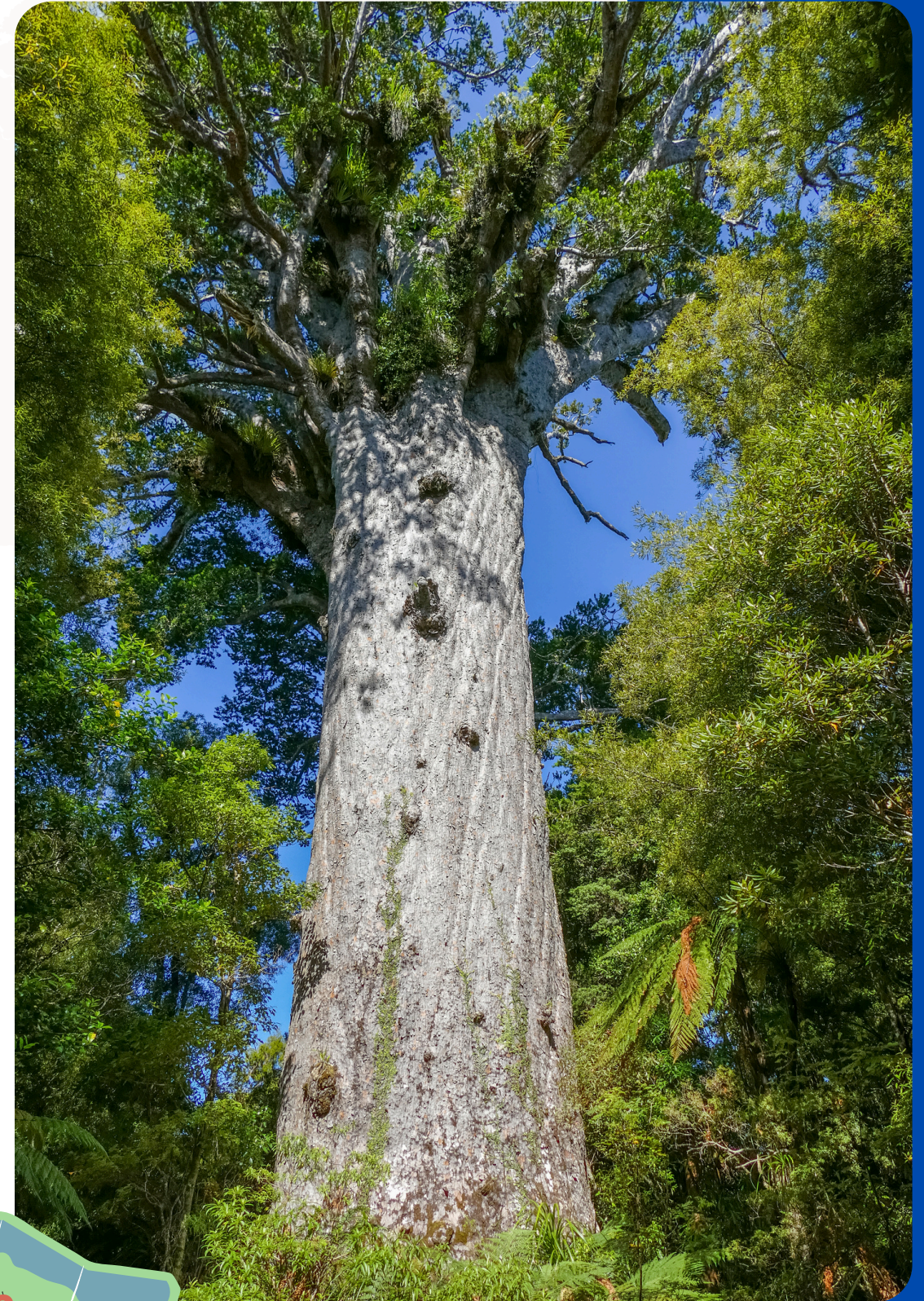




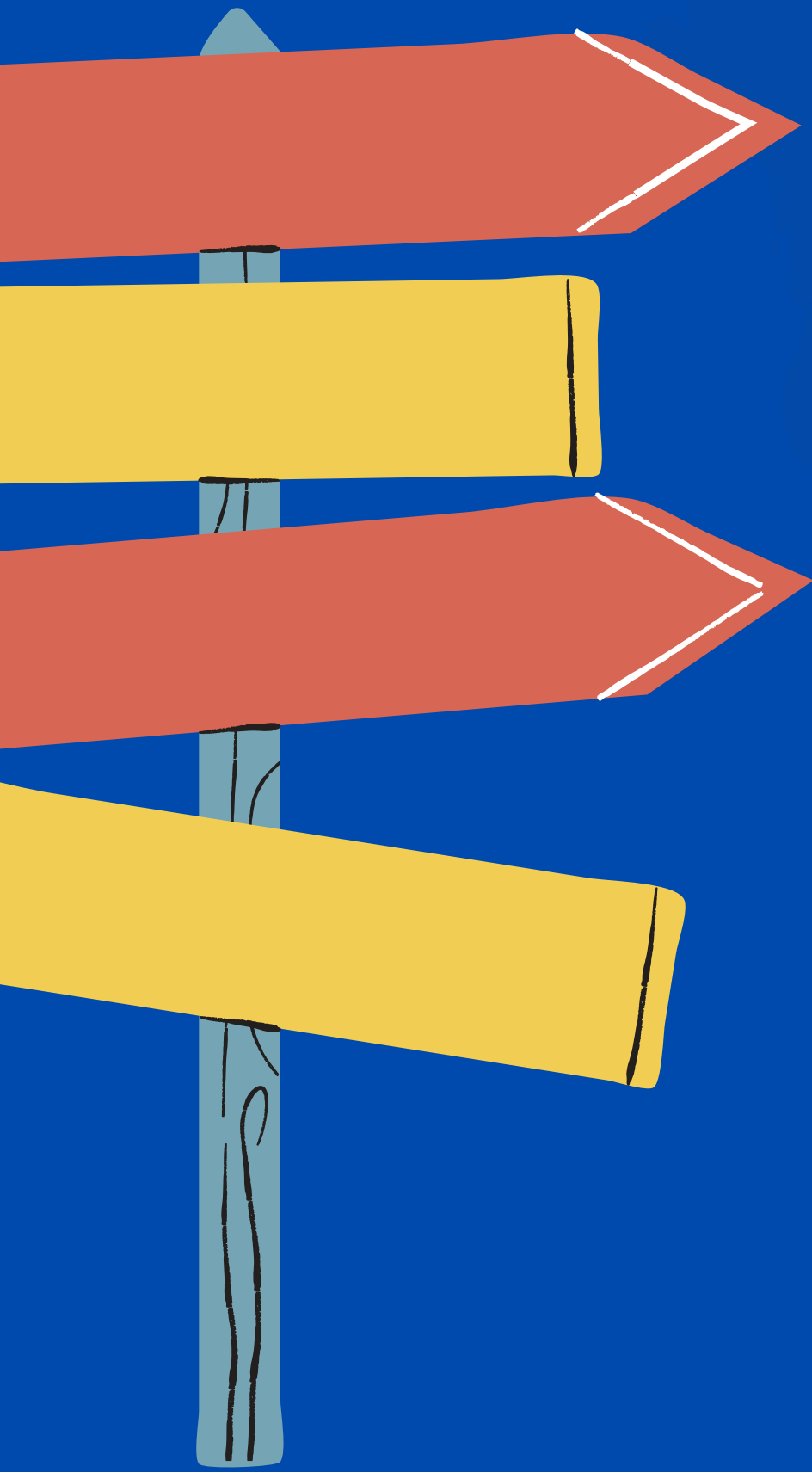


# The Lord of the Forest!

Tāne Mahuta is a giant kauri tree in New Zealand's North Island, estimated to be over 2,500 years old. It's one of the oldest and largest trees in the world. Trees in the forest are seen as Tāne-mahuta, rising to separate earth and sky. Tāne, the tree, holds the sky aloft, bringing light into the world.







**How many points did  
you get?**





# Check your rank level!

9

**Adventurer**

8-7

**Traveler**

6-5

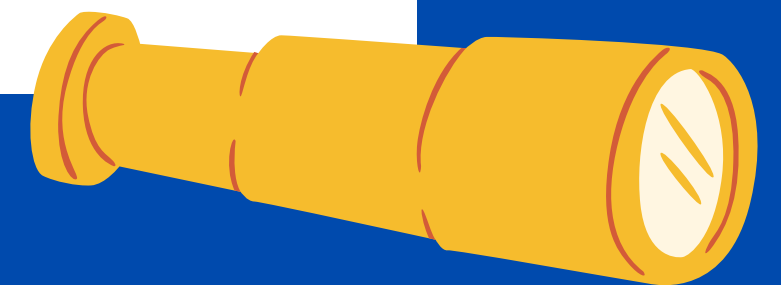
**Backpacker**

4-3

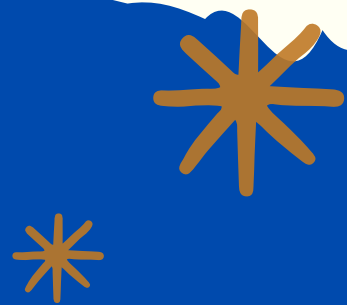
**Tourist**

2-0

**Amateur Tourist**



**Congratulations!**



# Certificate of Achievement



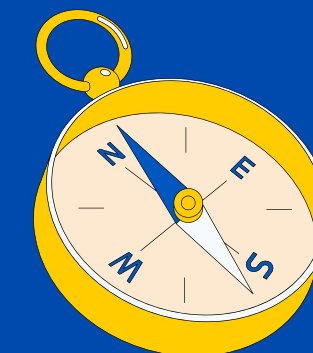
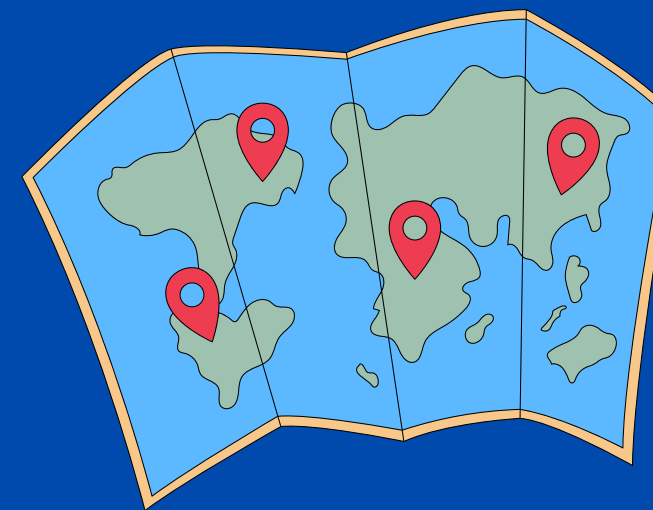
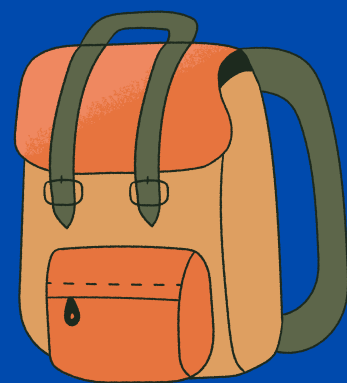
**Awarded to:** \_\_\_\_\_

For completing the "Discover New Zealand" Quiz with curiosity and courage!

You explored the country's amazing landscape and wildlife and showed what a brilliant Little Explorer you are.

Keep exploring, learning, and dreaming big.

The Little Explorers' Journal





# WANT TO TRAVEL THE WORLD THROUGH ADVENTURE STORIES?

Join our newsletter on [www.thelittleexplorersjournal.com](http://www.thelittleexplorersjournal.com)



# Want to join the Intrepid Explorers on their most mysterious mission yet?

**Solve the riddles. Find the stolen artefact. Survive the mission.**

When thirteen-year-old Archie signs up for a high-stakes virtual reality game, he has no idea he's about to embark on the adventure of a lifetime. Thrown together with four unlikely teammates, Archie must decode historical puzzles, defeat dangerous pirates, and survive a cassowary attack...all to recover a priceless painting before it's lost forever.

But just when the team thinks the game is over, a mysterious email changes everything: an ancient and sacred artefact, the royal flute of Makassar, has been stolen. It's time for the Intrepid Explorers to take on a real-world mystery.

From crocodile-infested swamps and an abandoned mine in the Australian desert to a bobby-trapped room in a famous art gallery, the five children will face life-threatening challenges. They'll have to rely on their courage, survival instincts and ability to solve cryptic puzzles to complete their mission before time runs out.

Will they be able to recover the sacred object before it vanishes forever?

**This book is the debut instalment in a new mystery-adventure series** that takes middle-grade readers on epic quests around the world, exploring cultures, wildlife, and landmarks along the way.

Adventure awaits, so grab your copy here



Perfect for **ages 9+**, this book is packed with:

- ✓ Action & mystery
- ✓ Riddles
- ✓ Beautiful landscapes
- ✓ Facts about Australia's culture and history
- ✓ Courage
- ✓ Friendship
- ✓ Teamwork

